

1.

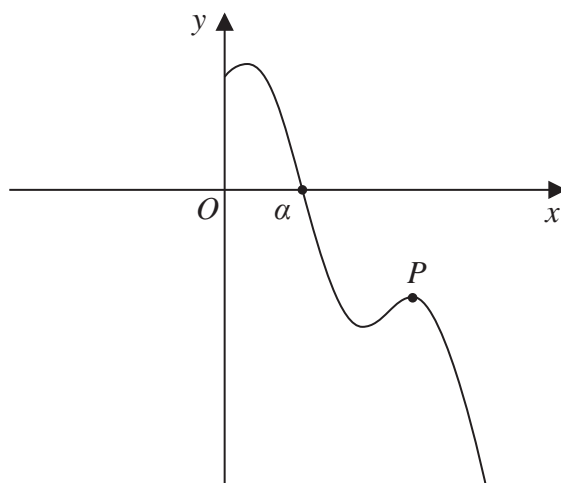


Figure 2

Figure 2 shows a sketch of part of the curve with equation $y = f(x)$ where

$$f(x) = 8 \sin\left(\frac{1}{2}x\right) - 3x + 9 \quad x > 0$$

and x is measured in radians.

The point P , shown in Figure 2, is a local maximum point on the curve.

Using calculus and the sketch in Figure 2,

- (a) find the x coordinate of P , giving your answer to 3 significant figures. (4)

The curve crosses the x -axis at $x = \alpha$, as shown in Figure 2.

Given that, to 3 decimal places, $f(4) = 4.274$ and $f(5) = -1.212$

- (b) explain why α must lie in the interval $[4, 5]$ (1)

- (c) Taking $x_0 = 5$ as a first approximation to α , apply the Newton-Raphson method once to $f(x)$ to obtain a second approximation to α .

Show your method and give your answer to 3 significant figures. (2)
